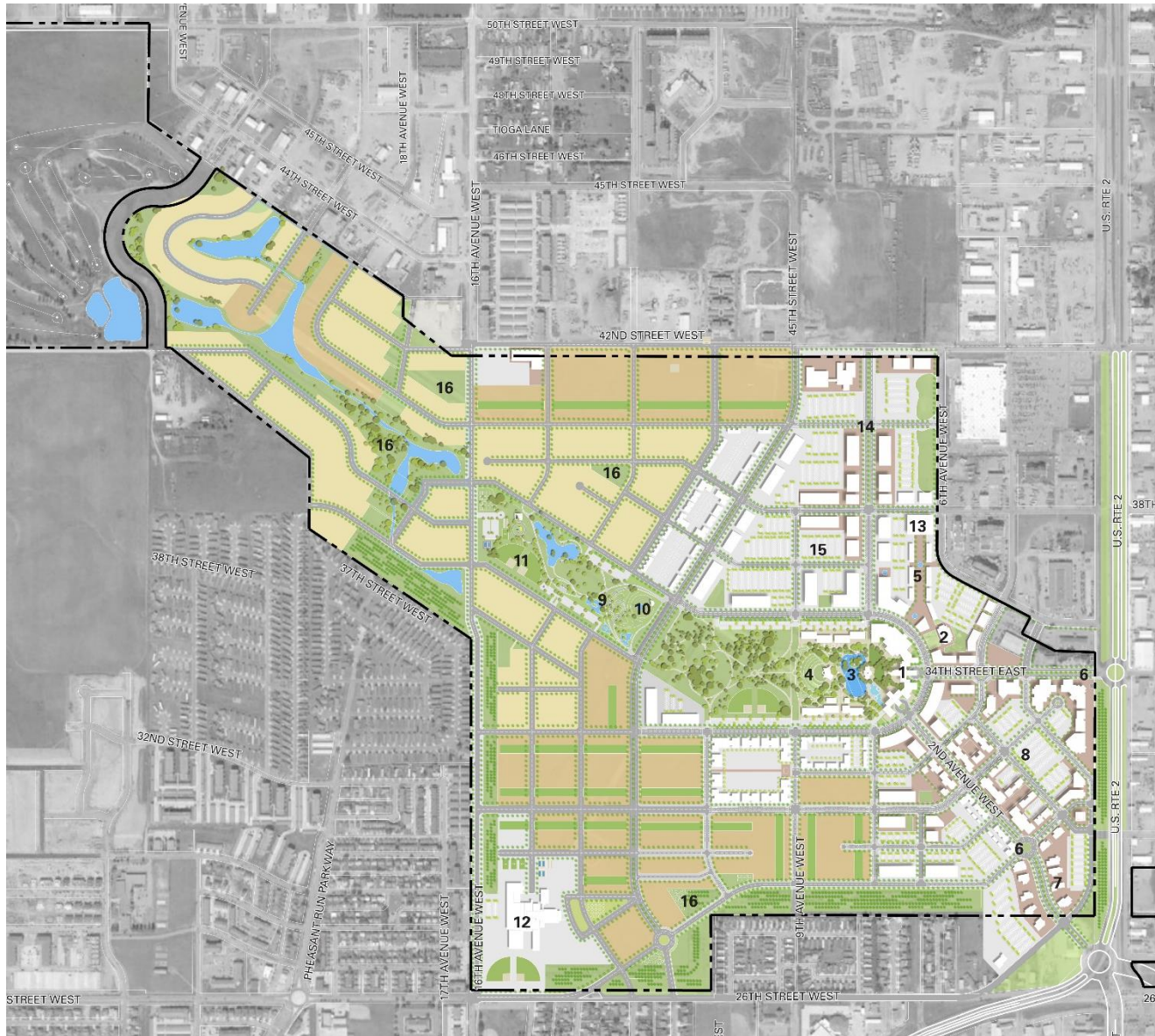


# MASTER PLAN ILLUSTRATIVE



- 1 CIVIC CENTER/ HOTEL
- 2 EXISTING TERMINAL / FUTURE MUSEUM
- 3 ICE RIBBON / SKATE RINK
- 4 AMPHITHEATRE
- 5 RETAIL PROMENADE
- 6 GATEWAY
- 7 RESTAURANT / FOOD SERVICE
- 8 COMMERCIAL / RETAIL
- 9 REGIONAL PARK
- 10 SMALL PERFORMANCE SPACE/SLED HILL
- 11 SPORTS FIELDS
- 12 SCHOOL
- 13 EXISTING AIRPORT HANGAR
- 14 INNOVATION CENTER CAMPUS
- 15 BUSINESS EXPANSION / COMMERCIAL AREA
- 16 NEIGHBORHOOD PARK / STORMWATER MANAGEMENT

