

Opening - 10.10.2019

XWA Xtra



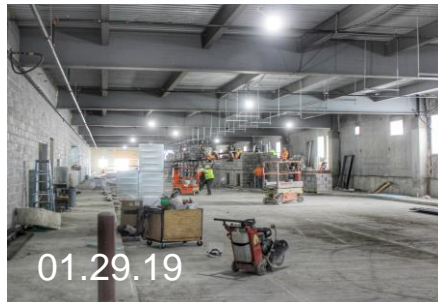
www.xwaproject.com

Airlines & Aircraft

Delta and United will move from ISN to XWA with more daily flights and larger aircraft. 76 seat aircraft such as the EMB 175 or the CRJ 900 could add to the Delta and United fleet mix. In fact, Williston travelers may see the increased capacity at ISN before the move to XWA. Recently, United added a fourth daily flight and Delta is in the process of adding a third this summer. The City of Williston is also continuing efforts to attract additional service options; however, there are no definitive commitments from other air carriers at this time.

Quick Fact:

The largest aircraft the new airport is designed to handle is the 757.



Opening This Year!

A New Year and 252 days away from a New Airport! Interior work at the XWA terminal is making great progress! There are approximately 95 workers on site each day and the terminal is now 51% complete. With each passing day new walls appear and more concrete is poured. The tug tunnel is fully paved and masons are erecting the interior ramp offices. Note the difference in the tug tunnel when compared to the image from November at left. Progress continues at the ARFF/SRE facility to the north of the terminal as well. We are looking forward to restarting the many paving projects this spring.

Rumor has it...

Allegiant, Frontier, and/or Southwest will service the new airport on opening day.
FALSE! There are no commitments from additional air carriers at this time.

General Aviation Community

The City of Williston is working to schedule a meeting with ISN General Aviation Tenants in the coming weeks to discuss the latest news relating to the GA community at XWA.

XWA Xtra

Airline contact info

Quite often travelers call the ISN operations office to inquire about airline related topics. The most up-to-date information concerning flight cancelations, delays, and other airline specific topics should be directed to the individual airline numbers below. Additionally, TSA related travel questions are found on the TSA web site. Be sure to review TSA's "What can I bring?" page.

Delta	1.800.692.6980
United	1.800.864.8331
TSA	www.tsa.gov

Photos from 1.29.19 courtesy of Ryan O'Rear, Assistant Airport Director



ARFF/SRE & Terminal as viewed from the corner of 59th street & 143rd avenue, northwest of the airport.



To view videos of the construction progress visit:
www.xwaproject.com/media

Airport Operational Readiness (AOR)

AOR projects focus not only on the construction of your new airport, but also on the technology, processes, and people inside. It is the responsibility of Chrysalis Global Aviation to ensure the systems, processes, people, and assets are organized and fully prepared for the move of operations to the new airport. www.chrysalisglobal.com

Comments? Questions? Rumors?

Contact:

Scott Vriesman

615.932.0332

svriesman@chrysalisglobal.com

